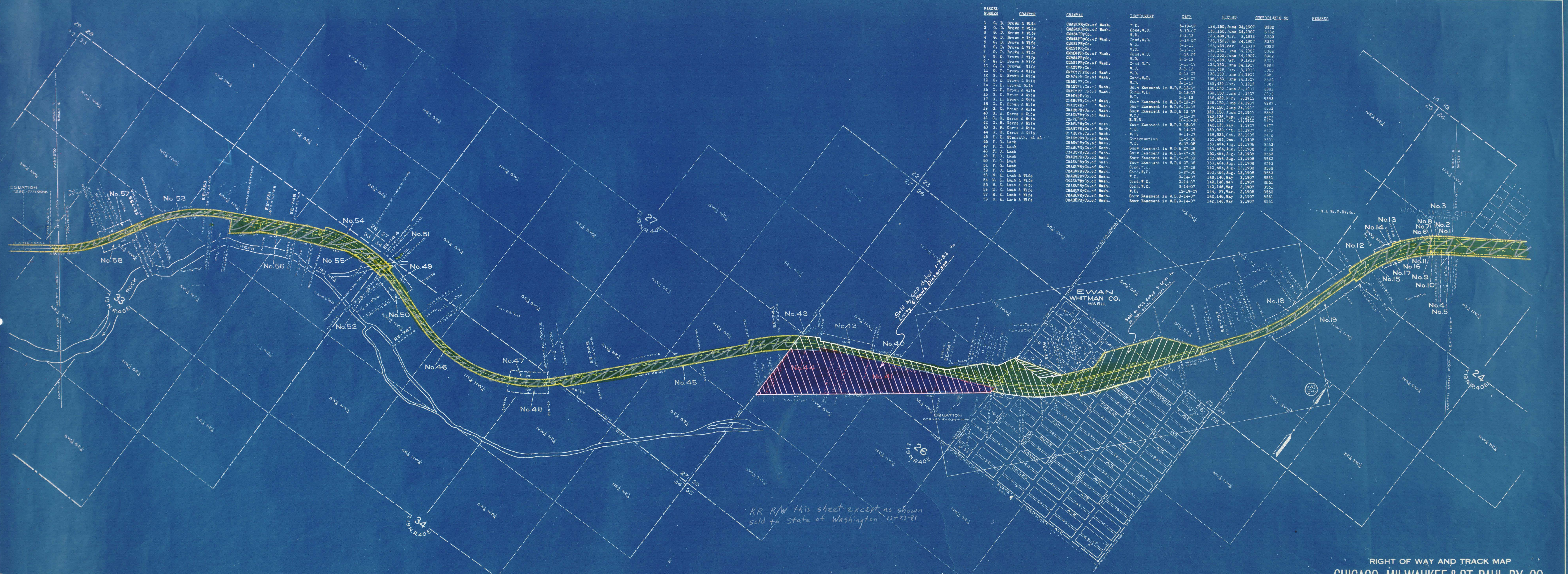


PARCEL NUMBER	GRANTOR	GRANTEE	INSTRUMENT	DATE	RECORD	SUBSTANTIATED TO	REMARKS
1	G. D. Brown & Wife	CHAS. PRYDE of Wash.	W.D.	5-13-07	138,150, June 24, 1907	8382	
2	G. D. Brown & Wife	CHAS. PRYDE of Wash.	Cont'd. W.D.	5-13-07	138,150, June 24, 1907	8383	
3	G. D. Brown & Wife	CHAS. PRYDE of Wash.	W.D.	3-1-13	189,489, Mar. 3, 1913	8384	
4	G. D. Brown & Wife	CHAS. PRYDE of Wash.	Cont'd. W.D.	3-1-13	189,489, Mar. 3, 1913	8385	
5	G. D. Brown & Wife	CHAS. PRYDE of Wash.	W.D.	5-13-07	138,150, June 24, 1907	8386	
6	G. D. Brown & Wife	CHAS. PRYDE of Wash.	Cont'd. W.D.	5-13-07	138,150, June 24, 1907	8387	
7	G. D. Brown & Wife	CHAS. PRYDE of Wash.	W.D.	3-1-13	189,489, Mar. 3, 1913	8388	
8	G. D. Brown & Wife	CHAS. PRYDE of Wash.	Cont'd. W.D.	3-1-13	189,489, Mar. 3, 1913	8389	
9	G. D. Brown & Wife	CHAS. PRYDE of Wash.	W.D.	5-13-07	138,150, June 24, 1907	8390	
10	G. D. Brown & Wife	CHAS. PRYDE of Wash.	Cont'd. W.D.	5-13-07	138,150, June 24, 1907	8391	
11	G. D. Brown & Wife	CHAS. PRYDE of Wash.	W.D.	3-1-13	189,489, Mar. 3, 1913	8392	
12	G. D. Brown & Wife	CHAS. PRYDE of Wash.	Cont'd. W.D.	3-1-13	189,489, Mar. 3, 1913	8393	
13	G. D. Brown & Wife	CHAS. PRYDE of Wash.	W.D.	5-13-07	138,150, June 24, 1907	8394	
14	G. D. Brown & Wife	CHAS. PRYDE of Wash.	Cont'd. W.D.	5-13-07	138,150, June 24, 1907	8395	
15	G. D. Brown & Wife	CHAS. PRYDE of Wash.	W.D.	3-1-13	189,489, Mar. 3, 1913	8396	
16	G. D. Brown & Wife	CHAS. PRYDE of Wash.	Cont'd. W.D.	3-1-13	189,489, Mar. 3, 1913	8397	
17	G. D. Brown & Wife	CHAS. PRYDE of Wash.	W.D.	5-13-07	138,150, June 24, 1907	8398	
18	G. D. Brown & Wife	CHAS. PRYDE of Wash.	Cont'd. W.D.	5-13-07	138,150, June 24, 1907	8399	
19	G. D. Brown & Wife	CHAS. PRYDE of Wash.	W.D.	3-1-13	189,489, Mar. 3, 1913	8400	
20	G. D. Brown & Wife	CHAS. PRYDE of Wash.	Cont'd. W.D.	3-1-13	189,489, Mar. 3, 1913	8401	
21	G. D. Brown & Wife	CHAS. PRYDE of Wash.	W.D.	5-13-07	138,150, June 24, 1907	8402	
22	G. D. Brown & Wife	CHAS. PRYDE of Wash.	Cont'd. W.D.	5-13-07	138,150, June 24, 1907	8403	
23	G. R. Karra & Wife	CHAS. PRYDE of Wash.	W.D.	3-1-13	142,136, May 2, 1907	8404	
24	G. R. Karra & Wife	CHAS. PRYDE of Wash.	Cont'd. W.D.	3-1-13	142,136, May 2, 1907	8405	
25	G. R. Karra & Wife	CHAS. PRYDE of Wash.	W.D.	5-13-07	138,150, June 24, 1907	8406	
26	G. R. Karra & Wife	CHAS. PRYDE of Wash.	Cont'd. W.D.	5-13-07	138,150, June 24, 1907	8407	
27	F. O. Lamb	CHAS. PRYDE of Wash.	W.D.	9-14-07	139,833, Oct. 23, 1907	8408	
28	F. O. Lamb	CHAS. PRYDE of Wash.	Cont'd. W.D.	9-14-07	139,833, Oct. 23, 1907	8409	
29	F. O. Lamb	CHAS. PRYDE of Wash.	W.D.	10-5-08	150,464, Aug. 13, 1908	8501	
30	F. O. Lamb	CHAS. PRYDE of Wash.	Cont'd. W.D.	10-5-08	150,464, Aug. 13, 1908	8502	
31	F. O. Lamb	CHAS. PRYDE of Wash.	W.D.	6-27-08	150,464, Aug. 13, 1908	8503	
32	F. O. Lamb	CHAS. PRYDE of Wash.	Cont'd. W.D.	6-27-08	150,464, Aug. 13, 1908	8504	
33	F. O. Lamb	CHAS. PRYDE of Wash.	W.D.	6-27-08	150,464, Aug. 13, 1908	8505	
34	F. O. Lamb	CHAS. PRYDE of Wash.	Cont'd. W.D.	6-27-08	150,464, Aug. 13, 1908	8506	
35	M. E. Lamb & Wife	CHAS. PRYDE of Wash.	W.D.	3-14-07	142,146, May 2, 1907	8507	
36	M. E. Lamb & Wife	CHAS. PRYDE of Wash.	Cont'd. W.D.	3-14-07	142,146, May 2, 1907	8508	
37	M. E. Lamb & Wife	CHAS. PRYDE of Wash.	W.D.	12-19-07	144,97, Mar. 2, 1908	8509	
38	M. E. Lamb & Wife	CHAS. PRYDE of Wash.	Cont'd. W.D.	12-19-07	144,97, Mar. 2, 1908	8510	
39	M. E. Lamb & Wife	CHAS. PRYDE of Wash.	W.D.	3-14-07	142,146, May 2, 1907	8511	
40	M. E. Lamb & Wife	CHAS. PRYDE of Wash.	Cont'd. W.D.	3-14-07	142,146, May 2, 1907	8512	



RR R/W this sheet except as shown  
sold to state of Washington 12-23-81

Sheet No. 6 of 12 sheets of C. M. & St. P. Ry. Co. Main Line  
from survey station 561+00.1 to survey station 772+27  
A. E. Lodge  
Valuation Engineer

RIGHT OF WAY AND TRACK MAP  
CHICAGO, MILWAUKEE & ST. PAUL RY. CO.  
OPERATED BY THE  
CHICAGO, MILWAUKEE & ST. PAUL RY. CO.  
COLUMBIA DIVISION MAIN LINE  
STATION 561+00.1 TO STATION 772+27  
SCALE: 1" = 400 FT. JUNE 30, 1918.  
OFFICE OF VALUATION ENGINEER  
CHICAGO, ILLINOIS. WHITMAN

